

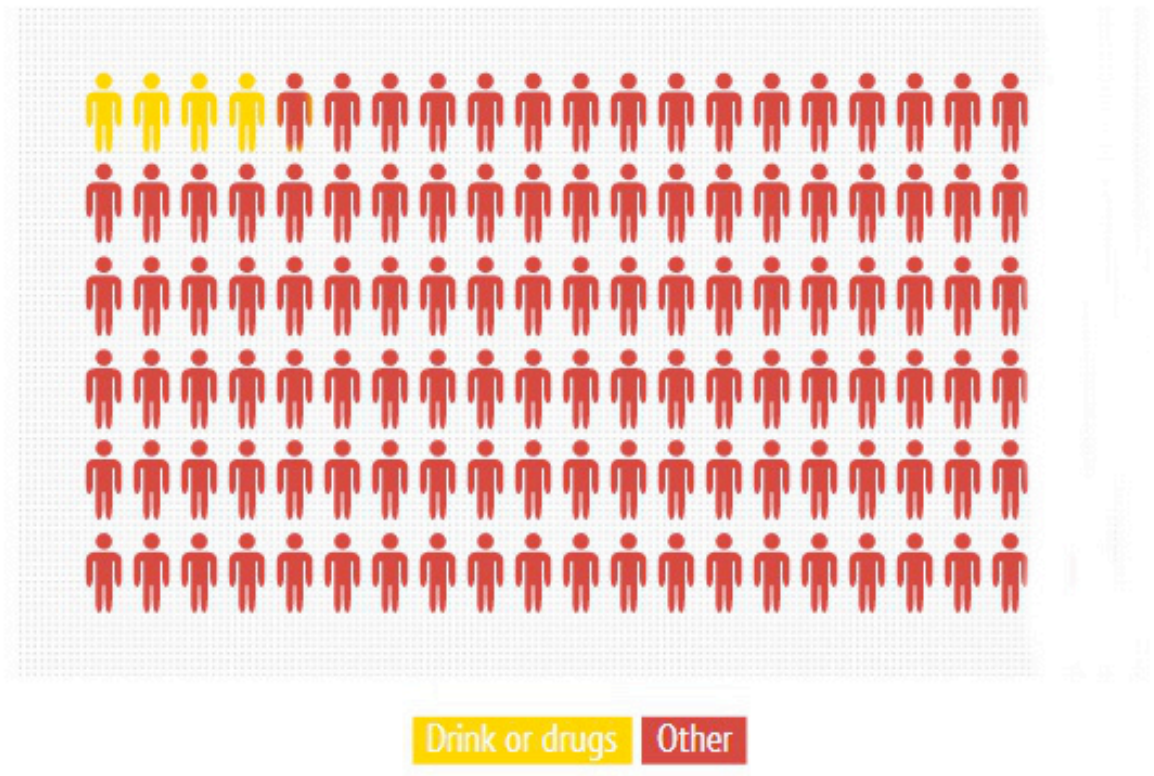
# **Truth and Lies about Poverty: Infographics**

Posted on [4 March 2013](#) by [Joint Public Issues](#)

Please use and share these infographics. Why not create your own and share them online?

## #2 They are addicted to drink and drugs

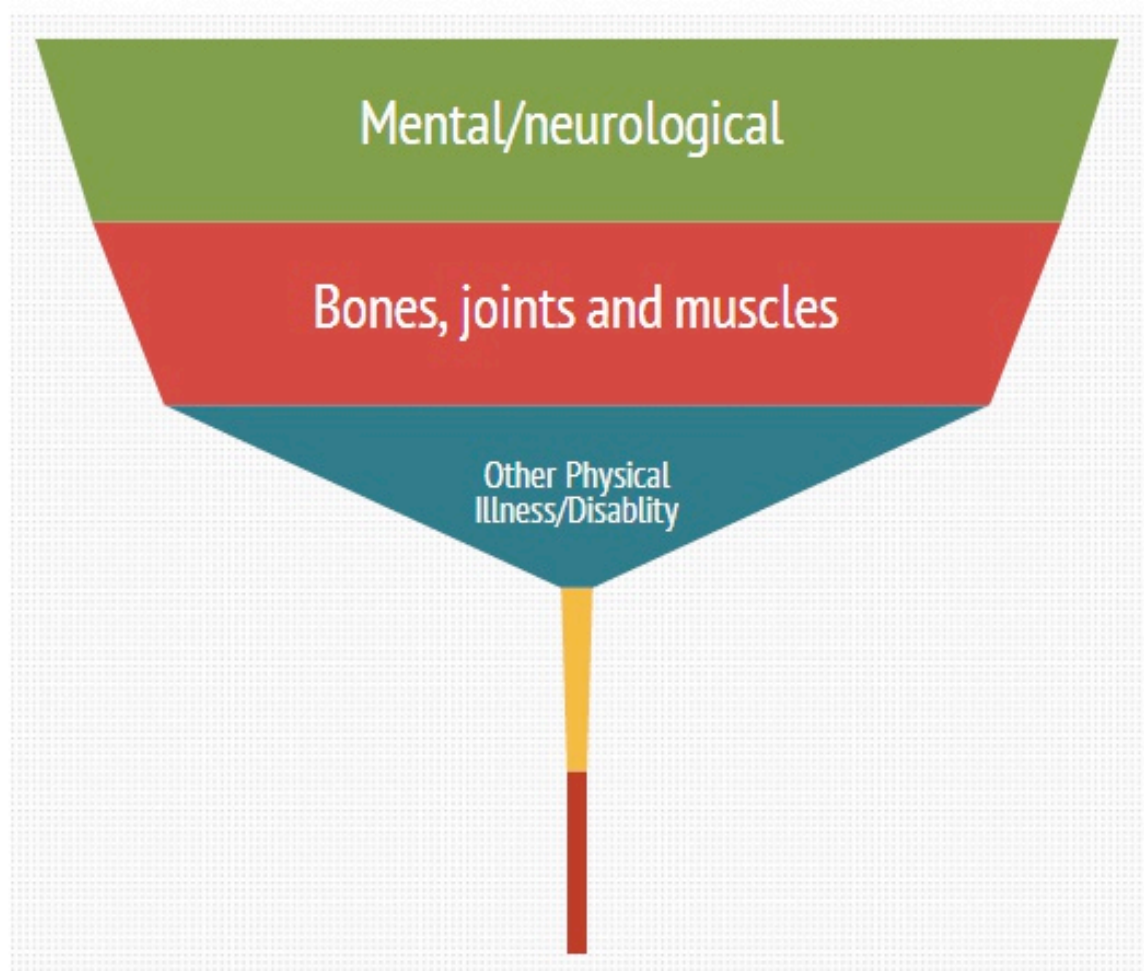
---



Only 4% of people claiming out of work disability payments do so because of alcohol or drugs. And only 1.7% of all benefits claimants do so.

# DLA claimants - main disabling condition (Can be in work)

---

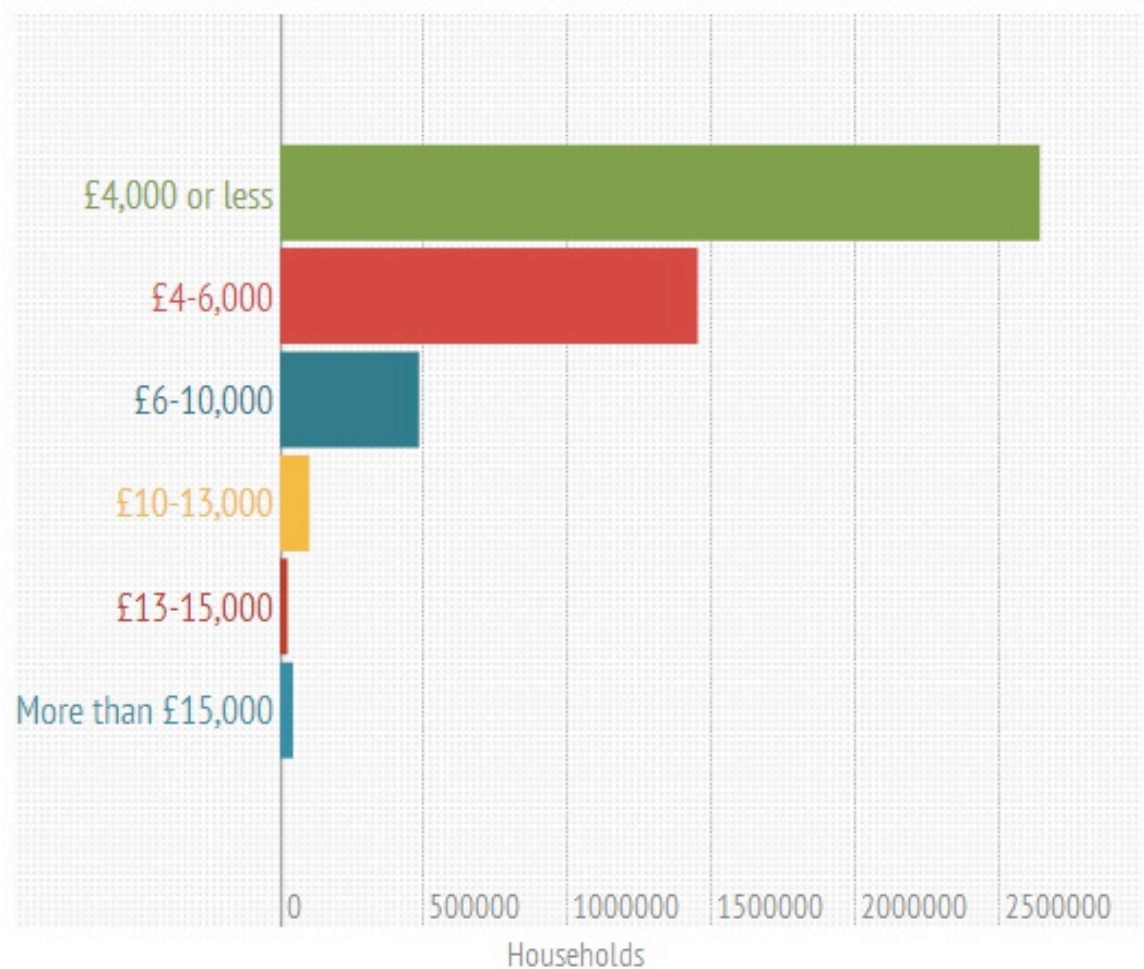


Mental/neurological    Bones, joints and muscles  
Other Physical Illness/Disability    Terminally Ill  
Alcohol and Drug Abuse

More people are claiming disability living allowance because they are terminally ill, than because of drink or drugs.

# Annual housing benefit payment bands

---



The vast majority of housing benefits payments are less than £6,000 a year. Payments of more than £500 a week are so rare we couldn't make them show up on this graphic.

## #5 'They' have an easy life on benefits

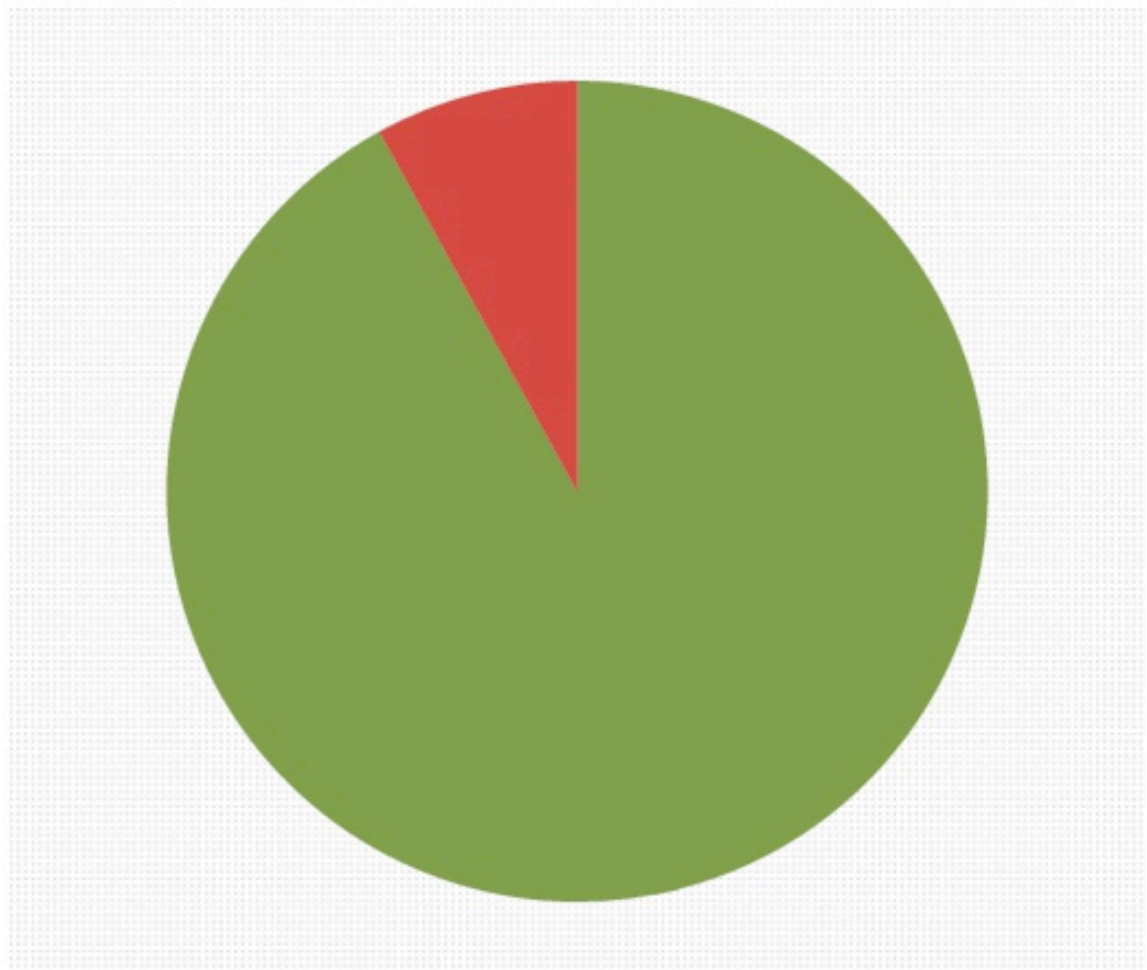
---



Only 3% of families receive more than £10,000 a year in housing benefit.

# 'It pays to be out of work and have more kids'

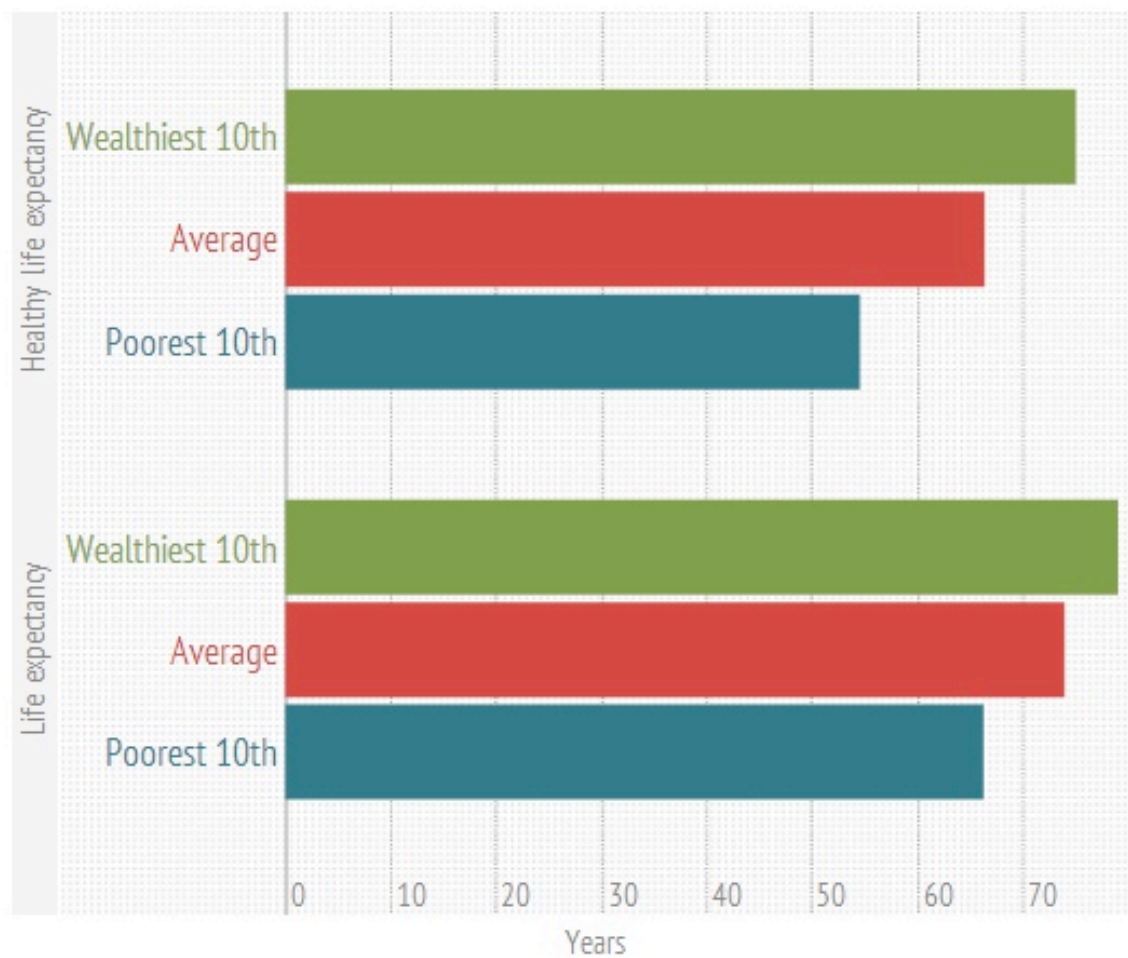
---



0, 1 or 2 children 3 or more children

8% of families claiming benefits have 3 or more children, about the same as a population as a whole.

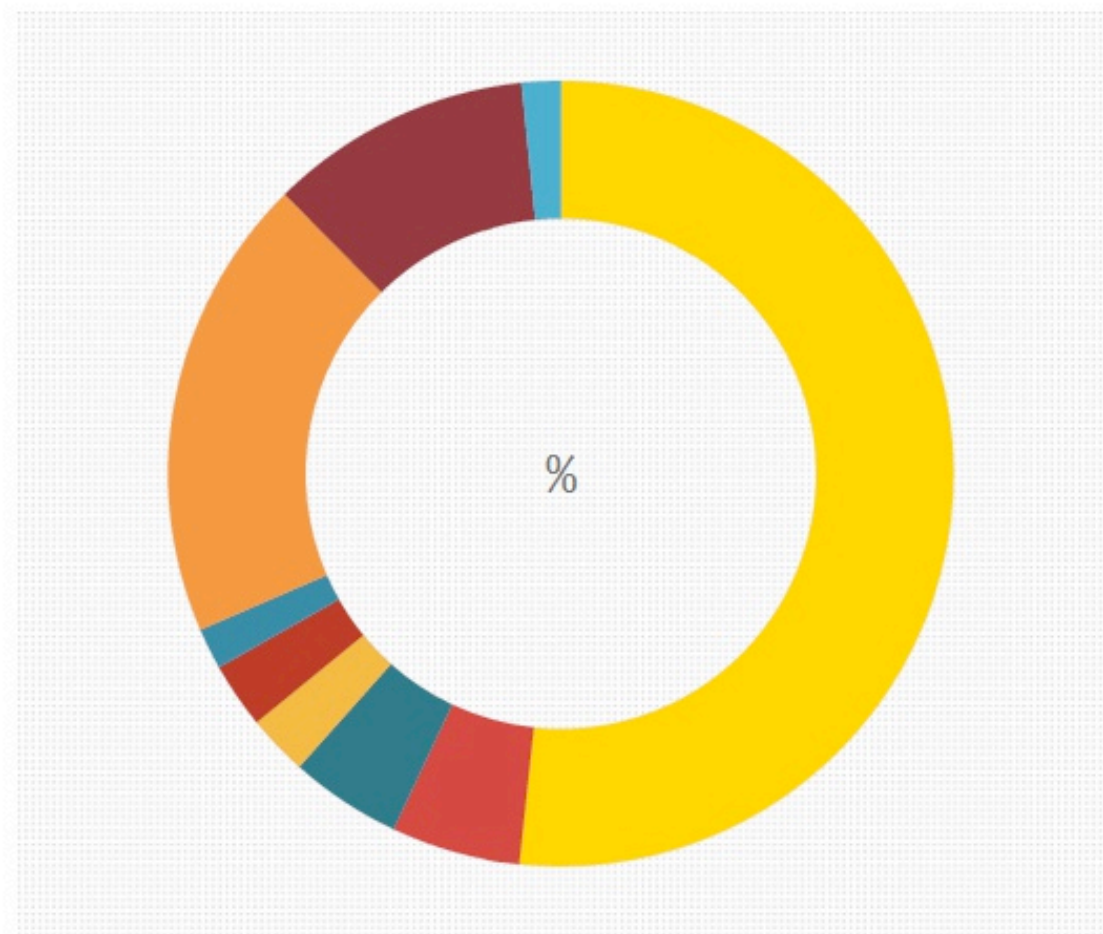
# Life expectancy (Scottish males)



Rather than being a soft option, being poor is a short cut to health issues and early death.

# Who receives benefits money?

---



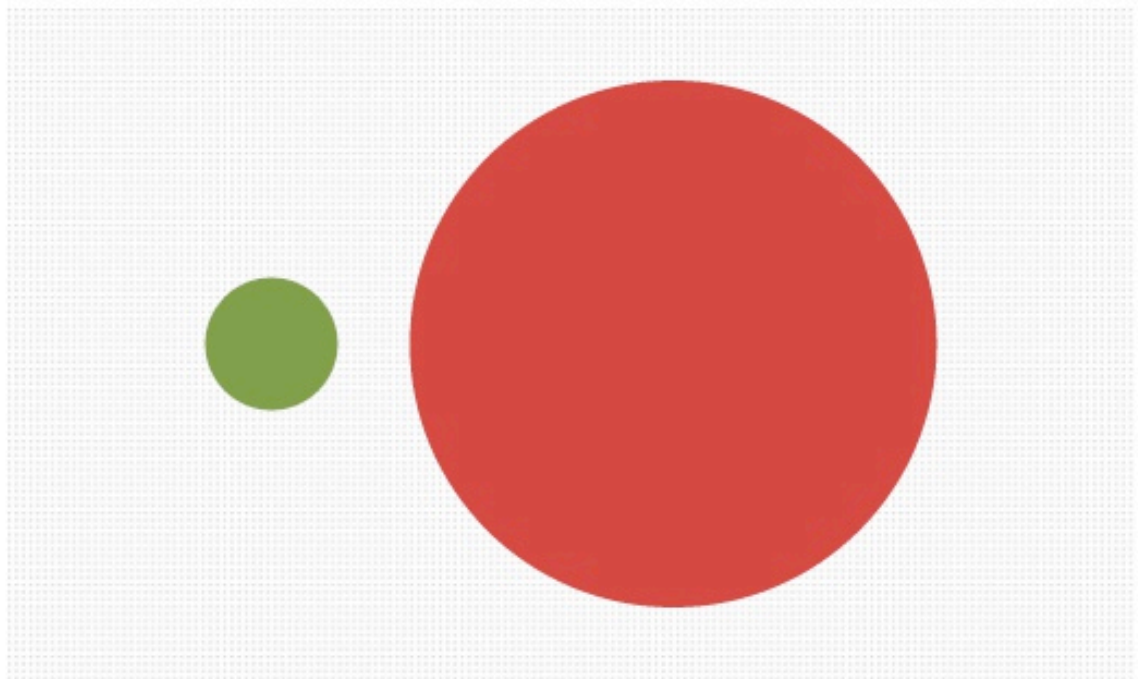
Pensioner households    with Disability and their carers  
Unable to work through illness/disability  
Income support (inc lone Parents)    Unable to find work  
Maternity benefits    Families with Children  
Working age Housing/Council Tax Benefit    Other

The biggest slice of the benefits budget goes to pensioners.



## #4 'They' are on the fiddle

---



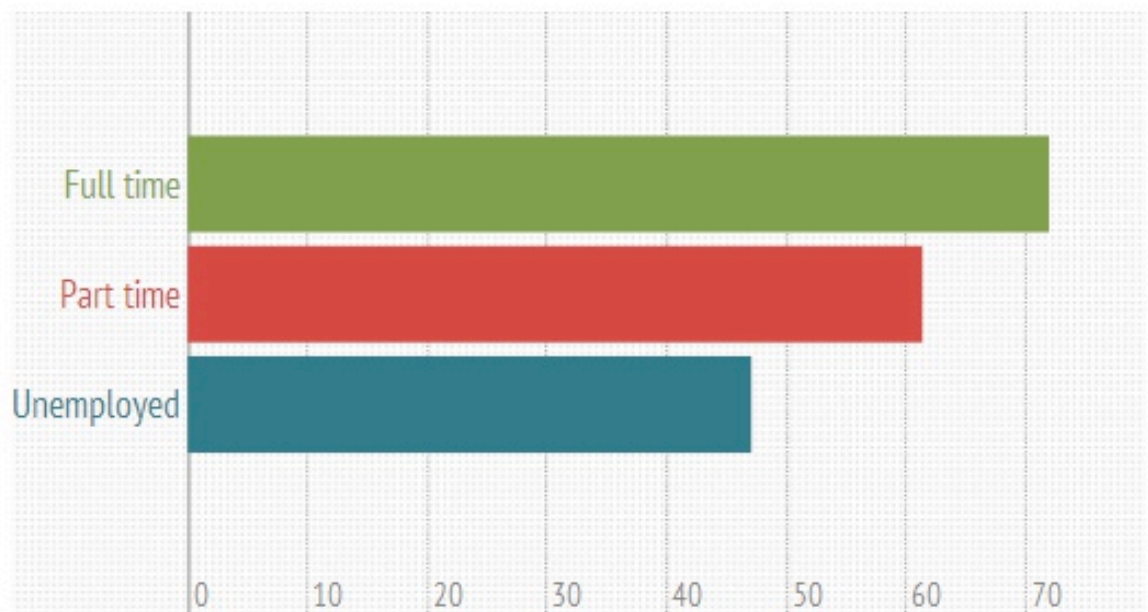
Benefits fraud

Tax avoidance/evasion

Benefit fraud is 0.9% of payments, or about £1.9 billion. Tax avoidance is about 6% of revenues due, or about £30 billion.

# Who had a drink last week? (%)

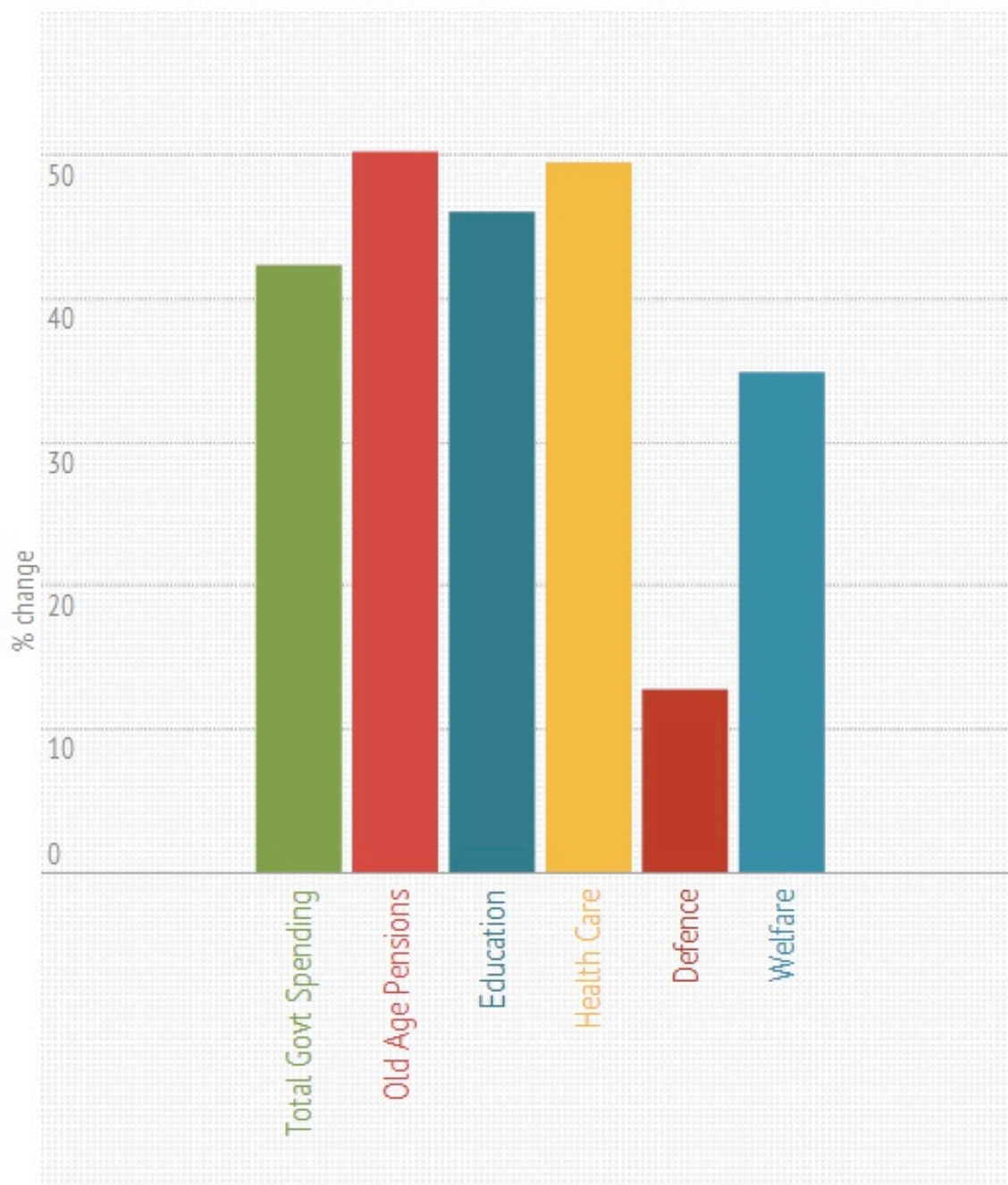
---



People out of work drink less than those in work. Please note this for the next time you discuss benefits in the pub.

# Rise in spending over 20 years (%)

---



In reality, welfare spending has risen less than overall government spending over the last two decades.

# Poverty numbers by work status

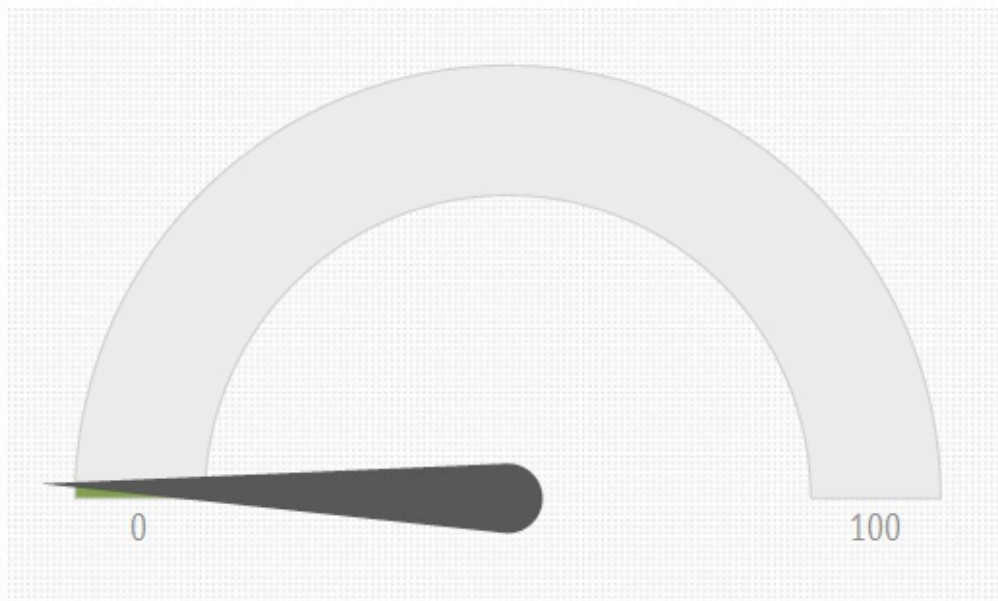
---



The poor are more likely to be in work or pensioners, rather than the image of being on the dole.

# Benefit fraud

---



Benefit fraud is 0.9% of payments

Only 0.9% of benefit payments are fraudulent; about a quarter of press coverage of welfare refers to fraud.



**0.04%**

of families receive more than £30,000 a year in housing benefit. There are



**5,000,000**

housing benefit claimants. Of these, at least



**20%**

are in work.

